

Manitoba
Department of Mines and Natural Resources
MINES BRANCH

THE CORRESPONDING SHEET OF THE NATIONAL TOPOGRAPHIC SERIES IS 64 C/10

Map No. 6

LEGEND

PRECAMBRIAN

- 25 Granitic rocks of uncertain age.
- 19 Pegmatite, aplite.
- 18 Aplitic microcline granite and granodiorite; some coarse phases; some alaskite.
- 17 Grey siliceous tonalite, massive to gneissic.
- 16 Black Trout Diorite.

SICKLE SERIES

- 14 Arkose and quartzite; some feldspathic sandstone and greywacke; very minor slate.
- 24 KISSEYNEW-TYPE GNEISSES
Some probably derived from Wasekwan sediments.
Quartz-hornblende-biotite-plagioclase gneiss. Contains some garnet locally; in places resembles Sickle sediments.
- 13 Conglomerate.
- 23 Stratiform granitoid paragneiss; undifferentiated granite. Some aplite stringers.

UNCONFORMITY

- 12 Pink to buff biotite and hornblende granite and granodiorite, massive to slightly gneissic. Includes some sheared granite at Wasekwan Lake.
- 11 Grey massive to gneissic hornblende-biotite tonalite.
- 10 Diorite and minor quartz diorite.
- 9 Hornblende gabbro and hornblende. Includes some undifferentiated basic lavas.

WASEKWAN SERIES

- 8 Banded iron formation.
- 7 Tuff, agglomerate and breccia; some interbedded sedimentary rocks, and flows.
- 5 Plagioclase amphibolite derived from andesite and basalt. Minor interbedded sediments and pyroclastics.
- 4 Predominantly impure quartzite, but including minor amounts of other sediments and volcanic rocks.
- 3 Interbedded volcanic, sedimentary and/or tuffaceous rocks.
- 2 Greywacke, quartzite and derived quartz-biotite-feldspar gneisses and schists.

SYMBOLS

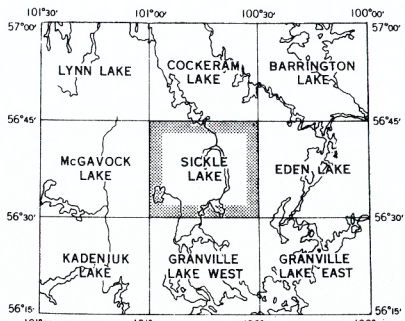
- Geological boundary approximate assumed doubtful
- Outcrop, or area of small outcrops
- Strike and dip of bedding inclined vertical top known overturned Dip not reported
- Strike and dip of schistosity or foliation inclined vertical Dip not reported
- Trace of axial plane: syncline, anticline
- Shear zone or fault, with direction of motion and plunge of linear features.
- Strike and dip of jointing inclined vertical known assumed
- Plunge of linear feature.
- Drag fold, with plunge of axis and sense of relative motion
- Glacial Striae
- Esker
- Prospect pit, or trench
- Anomalous magnetic declination
- Rapids, Falls and portage (with length)
- Swamp or open muskeg
- Centre of aerial photograph
- Area of mixed or hybrid rocks
- Shaft
- Rock or island
- Winter road

Magnetic Declination approximately 17 degrees 15 minutes east, 1950.

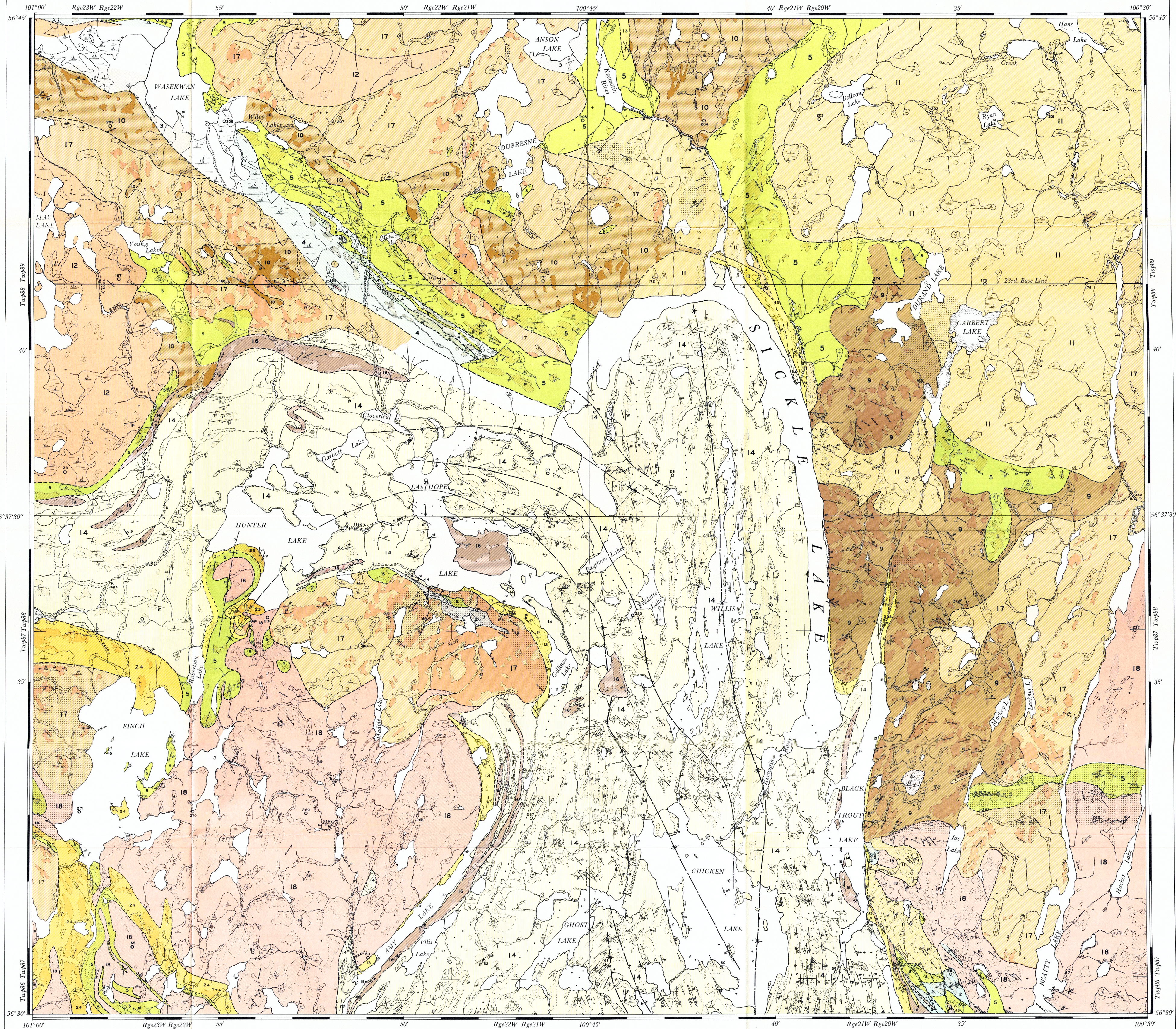
Geology by
G. C. MILLIGAN, 1957
Compiled from the field work of:
A. P. FAWLEY, 1948, 1949
J. D. BATEMAN, 1941

To accompany Publ. 67-1
Aerial photographs numbered: A11064: 166-177: 200-210
A10944: 22-32: 36-46
A10945: 228-238: 261-272

provide complete stereographic coverage of this area, and are available from the National Air Photo Library, Ottawa.



INDEX TO ADJOINING SHEETS



Base map compiled from aerial photographs taken by the Royal Canadian Air Force in 1947, and from surveys by the Department of the Interior, Canada, and the Province of Manitoba.

SICKLE LAKE
GRANVILLE LAKE MINING DIVISION

